

ISABELLA WORSLEY
COLLECTION

THE COLLECTION

Inspired by antique textiles and Italianate block-printing, the designs were initially developed for interior projects in a bespoke capacity. Core to our belief, is the idea that designs of the past should not be lost, but instead revived to ensure their relevance today. We are excited to now launch our first collection of weaves and wallpapers; available in an array of joyful designs and colourways.

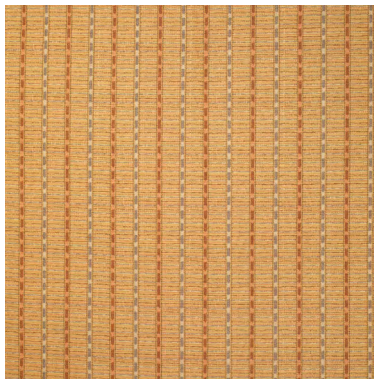
The collection has been made possible by the talented weavers and printmakers who work throughout the UK, a community we are grateful to be a part of.

PARIS

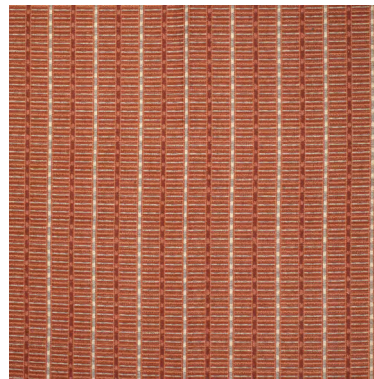


PARIS

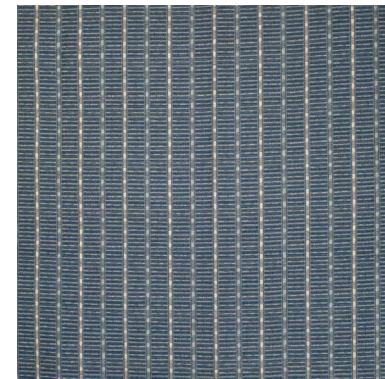
Inspired by a pencil drawing Isabella came across on a Parisian sourcing trip, Paris was the first weave we developed. Transferring this design onto the loom allowed for an intricate mix of tones. We loved creating this subtle stripe, which has remained a firm favourite in our studio.



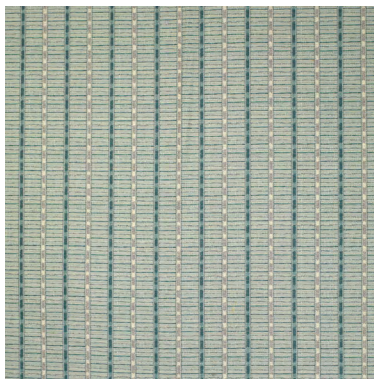
PAR001 Mustard



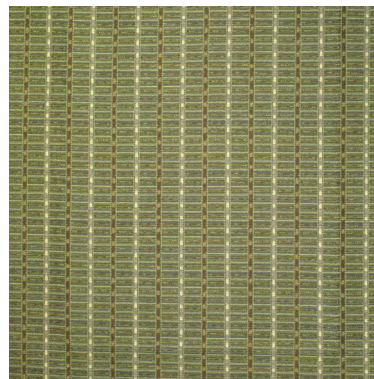
PAR002 Brick



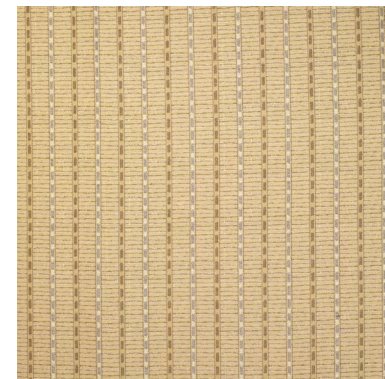
PAR003 Denim



PAR004 Sky



PAR005 Sage



PAR006 Natural

Composition: 49% Cotton, 38% Viscose, 13% Flax | Useable Width: 132cm | Repeat (V): 7cm | Repeat (H): 6.5cm

Lead time: 3-4 working days if in stock, otherwise 4-6 weeks

TEMPLE



TEMPLE

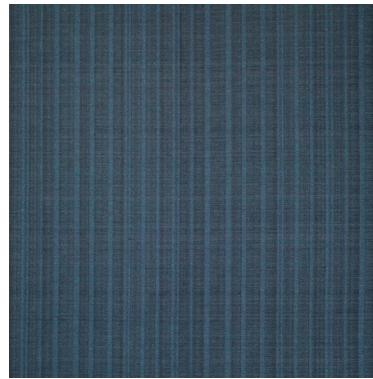
Temple is a fabric that is core to our collection, with a composition that lends itself well to both drapery and upholstery. We wanted to create a plain fabric that references the subtle dye variation found in antique pieces, full of life and character.



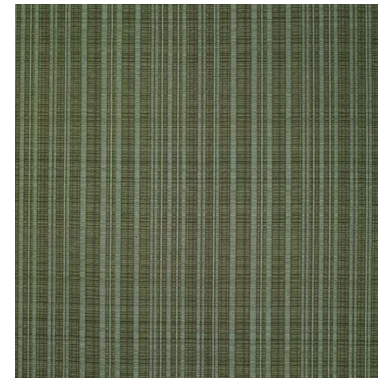
TEM001 Honey



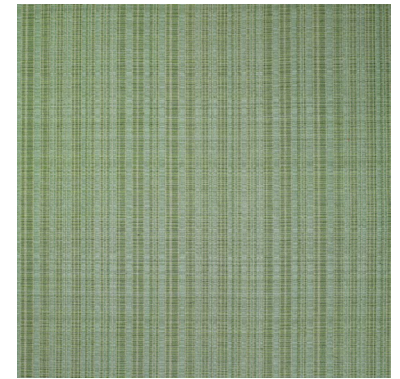
TEM002 Raspberry



TEM003 Indigo



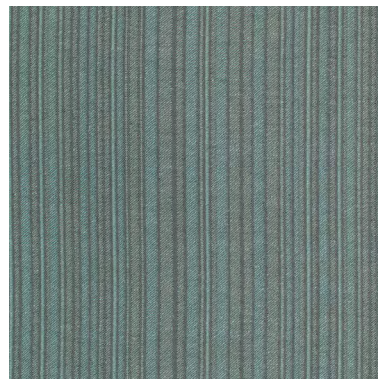
TEM004 Moss



TEM005 Sage



TEM006 Olive



TEM007 Lagoon



TEM008 Rose



TEM009 Natural



TEM010 Delft

Composition: 53% Cotton, 33% Viscose, 14% Flax | Useable Width: 124cm | Repeat (V): 1.5cm | Repeat (H): 20cm

Lead time: 3-4 working days if in stock, otherwise 4-6 weeks

TRELLIS



TRELLIS

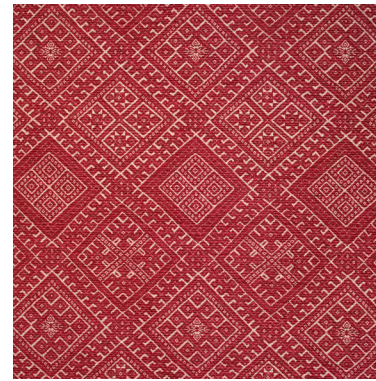
The geometric nature of this design with its subtle variation lends itself particularly well to upholstery. Given the hard-wearing nature of the weave, we have found it to be particularly striking on sofas and headboards. We hope the jewel-box range of colours will bring warmth and richness to any interior.



TRE001 Mustard



TRE002 Brick



TRE003 Raspberry



TRE004 Ocean



TRE005 Sky



TRE006 Sage



TRE007 Natural



TRE008 Olive

Composition: 75% Cotton, 19% Viscose, 6% Flax | Useable Width: 124cm | Repeat (V): 39cm | Repeat (H): 20.5cm

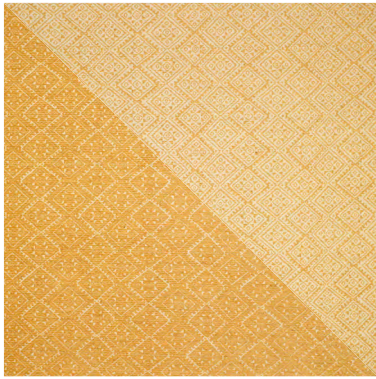
Lead time: 3-4 working days if in stock, otherwise 4-6 weeks

ATHENA

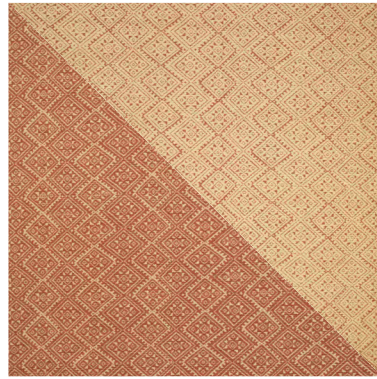


ATHENA

The smaller scale of Athena allows it to sit comfortably amongst any scheme or interior. The colourways chosen reference those of antique fabrics that have stood the test of time. We have developed this design to work on both the front and reverse, to allow for creative and interesting ways for it be used.



ATH001 Mustard



ATH002 Rose



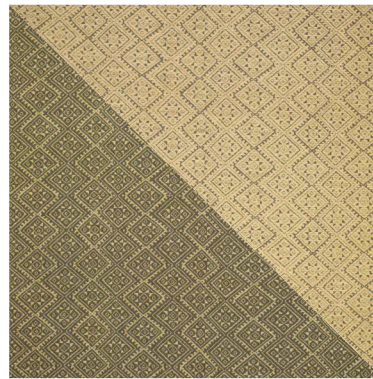
ATH003 Raspberry



ATH004 Ocean



ATH005 Sky



ATH005 Sage



ATH007 Chocolate

Composition: 59% Cotton, 31 % Viscose, 10% Flax | Useable Width: 124cm | Repeat (V): 15cm | Repeat (H): 31cm

Lead time: 3-4 working days if in stock, otherwise 4-6 weeks

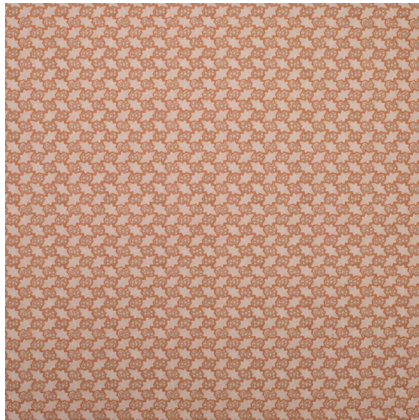
ASTRID

WALLPAPER

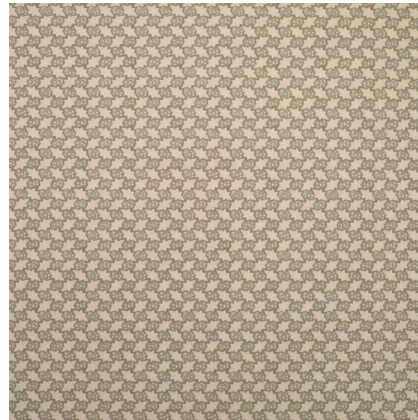


ASTRID

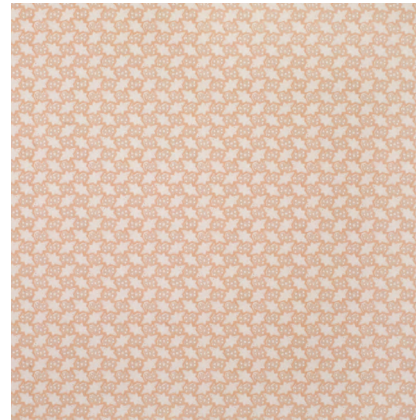
We always felt it would be important to develop a small scale wallpaper within our collection. The tonal colourways of Astrid act as a gentle backdrop to any room; the design has a calming mood when used in larger rooms, with close up detail that catches the eye in smaller spaces.



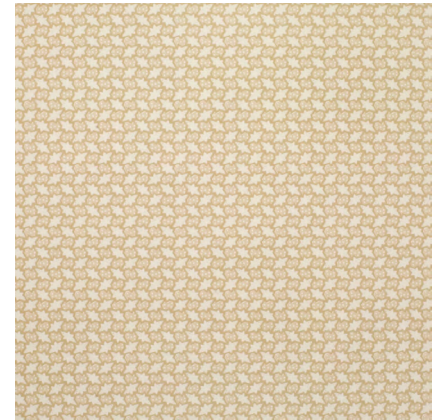
AST001 Cognac



AST002 Leaf



AST003 Putty



AST004 Oat

Digital wallpaper, sold by the metre | Printed width: 131cm (double width) | Repeat (W): 7.6cm | Repeat (H): 9.71cm

Lead time: 4-6 weeks

CADOGAN VINE

WALLPAPER



CADOGAN VINE

Inspired by block printing techniques, we wanted the design to capture the patina and detail of this tradition. Alongside our talented printers, we worked hard to translate this into a digital format to allow the design to be accessible in any quantity. The drag effect of the striped ground gives depth to this paper, complimenting the movement of the vines.



CAD001 Cognac/Raspberry



CAD002 Sky/Raspberry



CAD005 Sky/Leaf

Digital wallpaper, sold by the metre | Printed width: 134cm (double width) | Repeat (W): 132cm | Repeat (H): 66.25cm

Lead time: 4-6 weeks



Studio 49, Pall Mall Deposit, 124-128 Barlby Road, London, W10 6BL
collection@isabellaworsley.com | 020 8075 5232 | www.isabellaworsley.com