



SPERONELLA MARSH

Speronella Marsh's large and small scale wallpaper collections replicate the look and texture of her hand-block printed fabrics. Her designs are predominately inspired by her garden and the natural world, plus art and exhibitions, which embrace gentle and muted colour palettes. From her workshop in Shropshire, Speronella hand carves her designs on lino and block prints them onto antique linens, which she has successfully captured the look of in her wallpapers.





EASTERN LEAVES



Mustard and Dirty Pink



Sky and Oak



Dirty Pink and Olive



Dark Jade and Ocean Blue



ACORN



Sky and Cherry



Dirty Pink and Biscotti



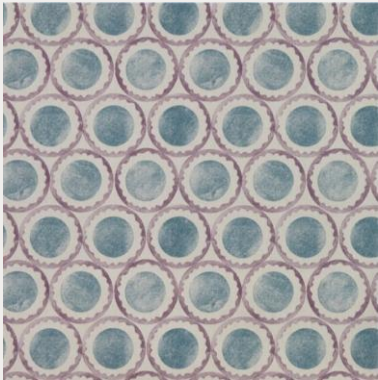
Olive and Dirty Pink



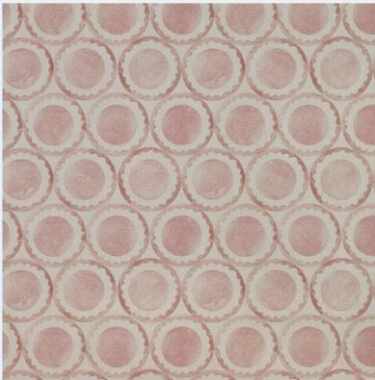
Ocean Blue and Dark Jade



LUCY'S INDIA



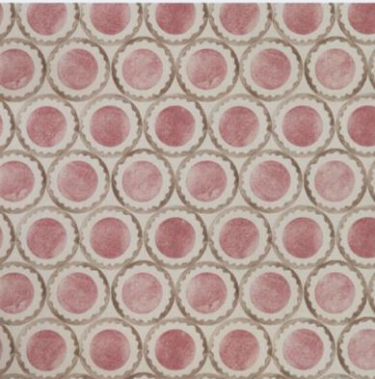
Sky and Ocean Blue



English Rose



Sky



Cherry



BOAT



Forest



Rosa



Ocean Blue



Mustard



SEAWEED



Dirty Pink



Forest



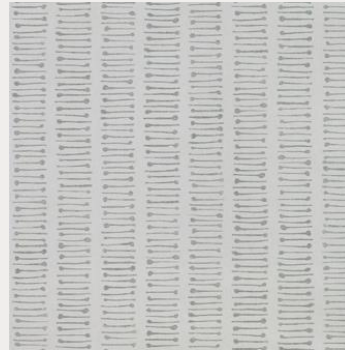
Ocean Blue



Mustard



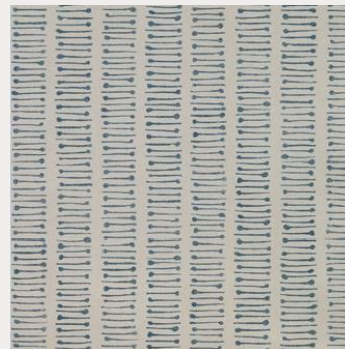
CINDY'S NEEDLE



Olive



Cherry



Forest



FLOTTA



Oxblood



Sage Green



Affogato



FROND



Mustard



Oak



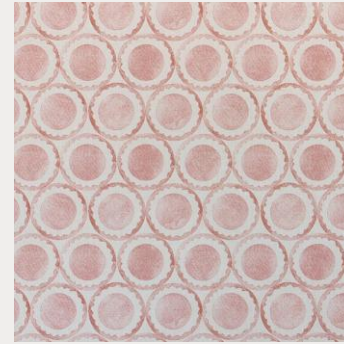
Dirty Pink



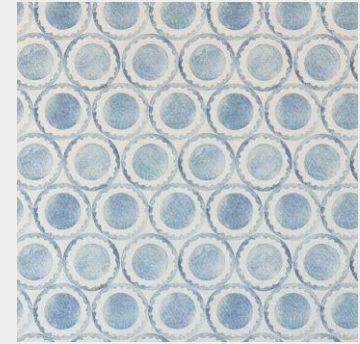
Forest



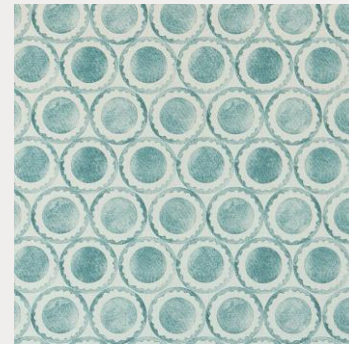
LUCY'S LIGHT



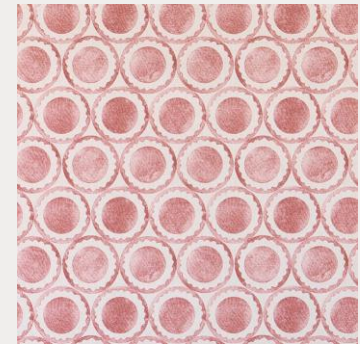
English Rose



Sky



Ocean Blue



Cherry